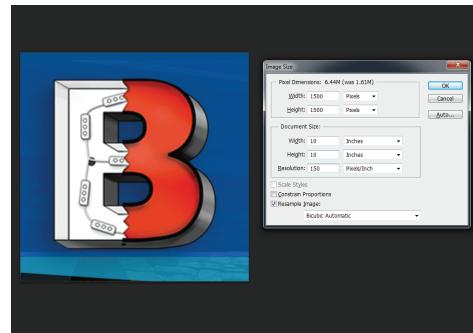
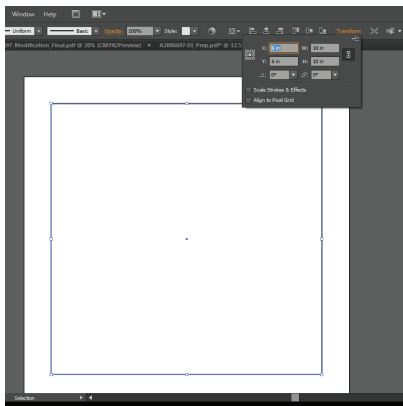


How to quote a Digital Print

If your Channel Letter Shape has a complex arrangement of color or is a Bitmap Image, here are a few ways to place that request on our website.

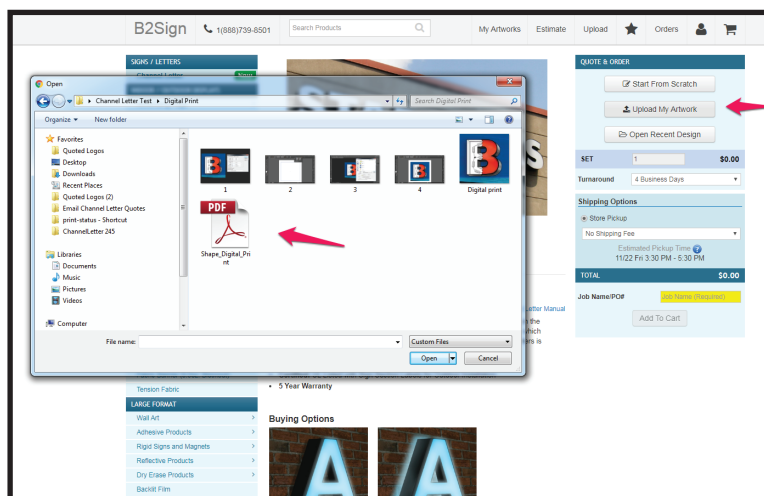
Step 1.

Save the image to the same size as your Channel shape dimension. In this example, we created a 10" X 10" square and saved an image to the same size.



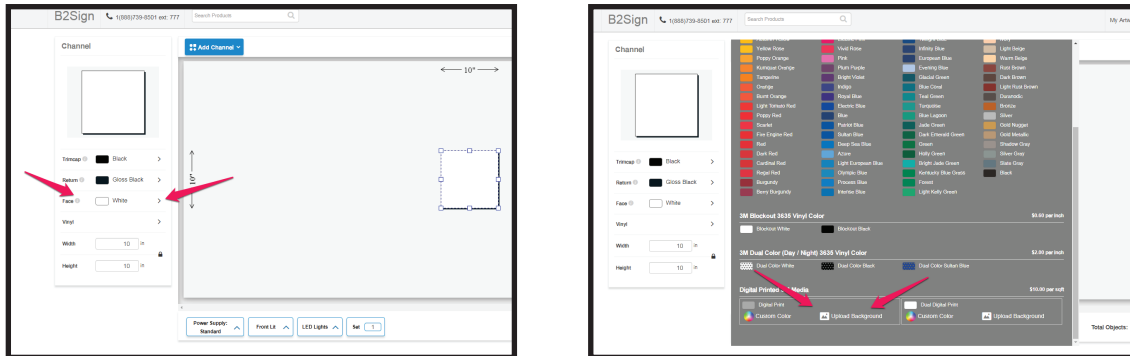
Step 2.

Upload the vector shape to the Chanel Letter section on the website through "Upload My Artwork".



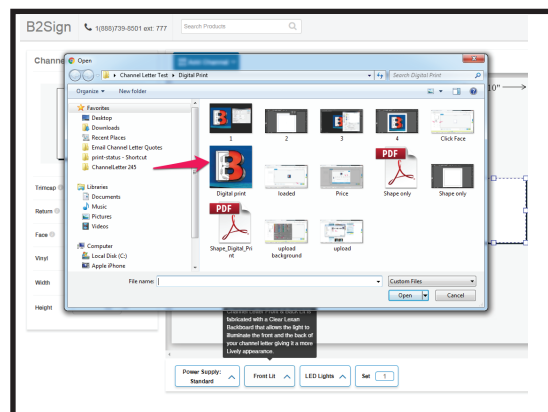
Step 3.

On the Left hand side, click on the “Face” option to expand the window. Scroll down to select “Upload Background”



Step 4.

Choose the image that you want to be printed on your Channel letter Shape.



Step 5.

Once your artwork is uploaded, you can click on “See Details” to review size and pricing.

